

WHAT ARE YOUR PESTOLOGY D.C.P. SURVEYS?

Our rat surveys are a combined DRAINAGE, PEST CONTROL & CONSTRUCTION survey.

The 3x considerations that must all be evaluated to be able to fully understand and successfully diagnose rat entry into building fabrics.

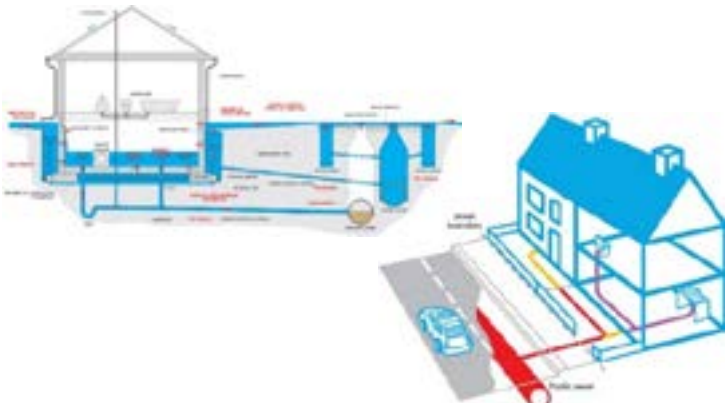
DRAINAGE

We will not only inspect all inlets and manholes within your property confines, but also map the waste systems to show how they orientate with the building footprint.

Our surveyors carry 3x types of inspection camera from a 17mm probe head, a 30mm gulley cam and a 50mm pan & tilt to enable maximum capability in viewing and mapping both foul and surface water systems.

They also are equipped with the sonde's, dye testing kits and all the access equipment required for fully comprehensive surveys.

Our surveyors are both certified drainage engineers AND qualified pest controllers - unlike standard drainage engineers, we conduct our surveys with a focus on solving the rat problem rather than simply churning out an incomprehensible condition report



CONSTRUCTION

Our surveyors have a good understanding of architectural history and how buildings are built as we find this is an essential requirement to work out how rats are moving between pipe and building fabric.

We know the differences between Victorian/Edwardian/1930's/ pre-War/post-War and new builds as well as how extensions and conservatories are built and the typical adaptations/ bodge that occurs.

Rat infestations within buildings very often combine both below and above ground routes of entry so an understanding beyond below ground drainage is a critical factor to a successful survey - drainage is not always to blame!

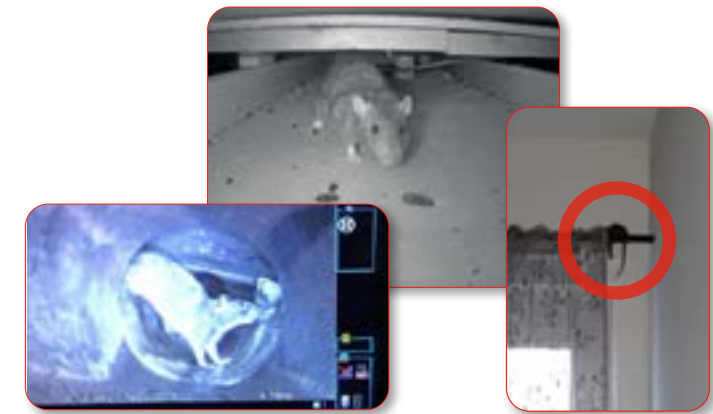


PEST CONTROL

We are servicing members of the British Pest Control Association, the National Pest Technicians Association and also meet the European standard EN16636 in Pest Management so we are a fully qualified pest control company.

Our surveyors understand rat behaviour, ecology and capability and because we specialise solely in rat ingress into building fabrics we have unparalleled experience and expertise in this area.

We don't just regurgitate what we've read in books or been told by others - we are free thinking and tell you what we've seen and what we know.



Pestology Limited

Unit 2 The Ham, The Ham Industrial
Estate, Brentford, Middlesex TW8 8EX

0800 877 2222

info@pestologyltd.co.uk

pestologyltd.co.uk



WHAT CAN I EXPECT ON THE DAY OF MY SURVEY?

DCP surveys take around 2 hours to be complete but it can be more or less than that depending on the size of the building and the complexity of the variables.

- We will need access to manholes and possibly to neighbouring properties on the day
- We will need access to both inside and outside the building
- If the drainage system is flooded or otherwise obstructed then this may hinder the CCTV work
- Surveyors report back to a Pestology Director who then prepares the final report and recommendations with reference to the surveyors findings
- You will receive the surveyors site photographs, CCTV imagery, site detail, comments & observations and the drainage map drawn by the surveyor
- Recommendations & remedial works are costed on a fixed price basis - there are no 'estimates'

SONDE:

All surveyors are equipped with top of the range RIDGID sonde's to enable them to locate the camera head above ground - this is essential in determining the orientation of any pipework with reference to building foot print.

Sonde's also give pipe depth at any given point which again is essential for comparison to foundation depth.

They will also show you where any buried manholes lie.

POWER TOOLS:

All surveyors have a range of power tools, ladders and torches to enable above ground investigative work to be thorough and comprehensive.

DRAIN CAMERA:

All surveyors have 3x drain cameras to cover all potential requirements:

Minicam Solo Pro+ 60m with 'pan & tilt' camera - for inspection of 4"-12" diameter pipe runs with the unique ability to look left & right and up & down.

Maxprobe TrapJumper 40m 'gully cam' - for inspection of 3" - 4" diameter pipes typically associated with surface water systems and can be introduced around P-trap gulleys, toilet bends and other restricted insertion points.

Ridgid CA-350X hand help camera - tiny 17mm camera head for inspection of tight pipes and tight places.

DYE TESTING:

All surveyors have a full range of dye testing equipment including pumps and long reach lances - essential apparatus for determining live and redundant connections across all waste systems.

MANHOLE LIFTERS:

All surveyors have the complete range of lifting equipment to tackle any manhole including magnet lifters, 'ManUp' lifters, J-hooks, prybars and the heavy duty 'Manhole Buddy' trolley lifters capable of 150kg lifts by a single man.



WHAT'S DIFFERENT ABOUT PESTOLOGY SURVEYS?

We will not only inspect all inlets and manholes within your property confines, but also map the waste systems to show how they orientate with the building footprint.

In terms of the drainage CCTV work, Pestology surveys are done with 'Pan & Tilt' cameras.

These can rotate the end of the camera and also tilt it to left and right, all at the same time in a continuous motion

Essentially this means you can turn the cameras head and look up, down, right and left - standard axial drain cameras are fixed and just look straight ahead.

Pan & tilt cameras vastly increase your understanding of any given waste system and the defects within it - they are also able to confirm what inlets are capped or uncapped in a way standard axial cameras just can't.

The surveyors also carry smaller, more flexible 'gully cams' that can pass toilet U-bends and go through gulleys to inspect where manhole access isn't present.

Our surveyors are both certified drainage engineers AND certified pest controllers so we comprehensively span both worlds and have expertise in both.

We not only cover off drainage but we ensure all existing and potential above ground routes of entry are also considered as typically these are present too and the infestation will continue if they are not additionally tackled.

We also have a good understanding of how houses of a certain era are built and therefore can advise on whether we think its possible for rats to come across from a neighbouring property.

Rat ingress into building fabrics is ALL we do so we are a specialist company with unparalleled expertise in this niche area.



Pestology Limited

Unit 2 The Ham, The Ham Industrial
Estate, Brentford, Middlesex TW8 8EX



0800 877 2222



info@pestologyltd.co.uk



pestologyltd.co.uk



FIND OUT MORE ABOUT PESTOLOGY...

Pestology deals solely with rat ingress into building fabrics - its all we do and we do it on a large scale.

We have an unmatched understanding of how these situations arise and how to successfully fix them for good.

We are well equipped, well resourced and extremely experienced using full time staff who are highly trained and passionate about our niche industry.

See our reviews and then book your DCP survey!



Pestology Limited
Unit 2 The Ham, The Ham Industrial
Estate, Brentford, Middlesex TW8 8EX

0800 877 2222
info@pestologyltd.co.uk
pestologyltd.co.uk

